

OPDRACHTGEVER :



De Scheg
BELEVING IN BEWEGING

SCHETS-ONTWERP

PRESENTATIE TECHNISCHE SESSIE - RAAD

4-2-2026



Max van Huut

STUDIO

nous^ous



**gemeente
Deventer**

ARCHITECTUUR MET RESPECT VOOR MENS EN AARDE



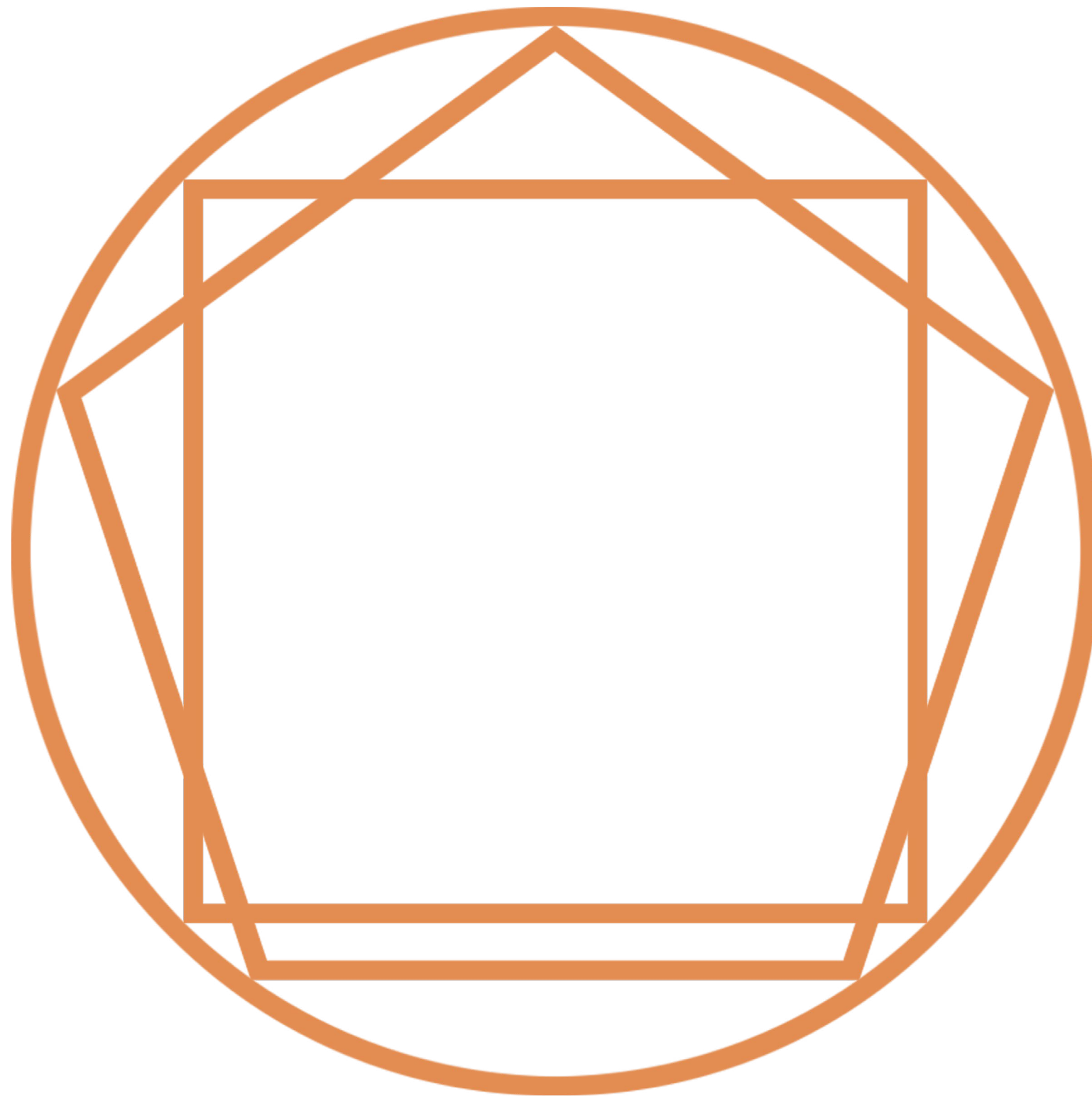
RATIO



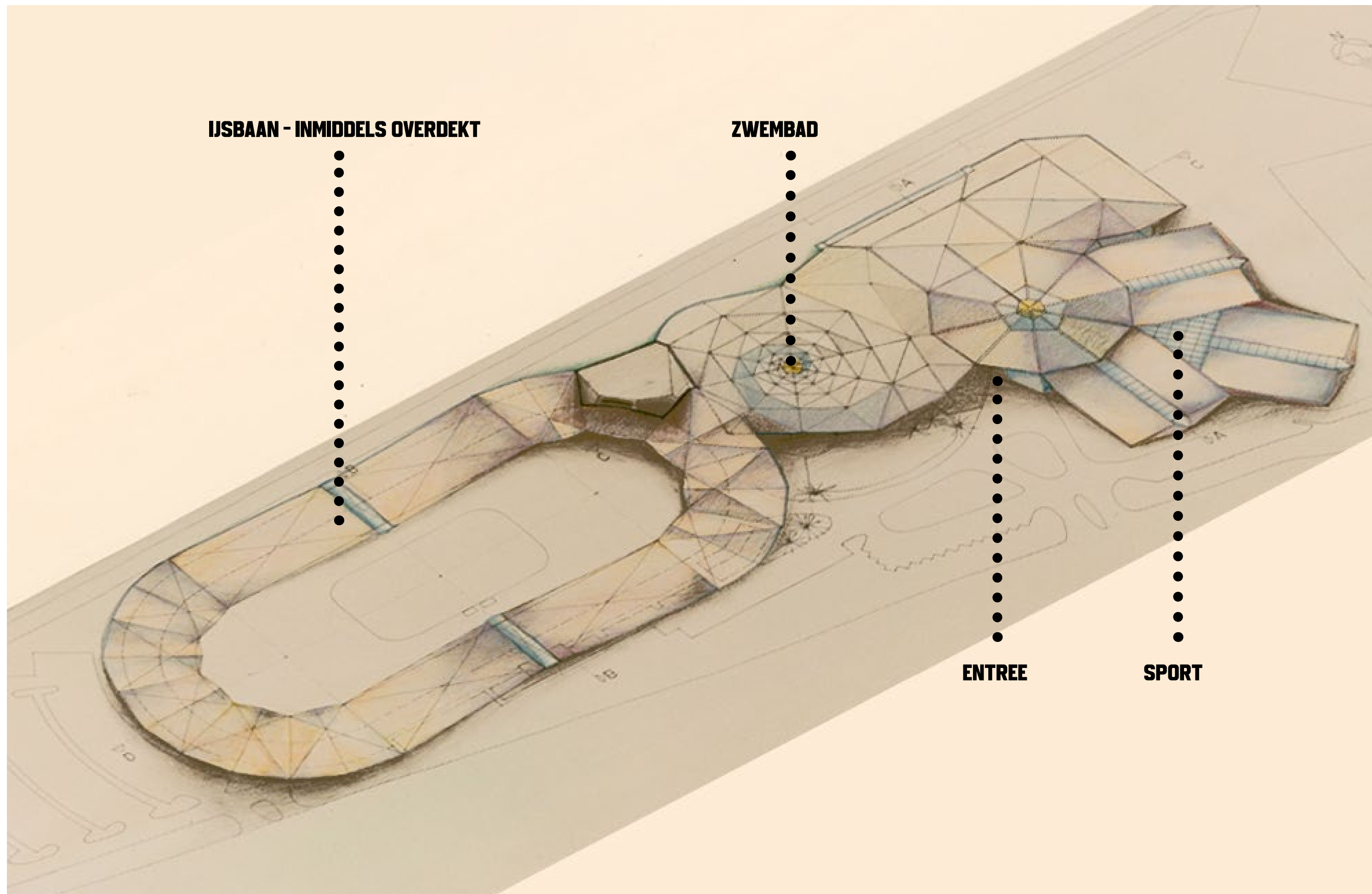
INTUITIE

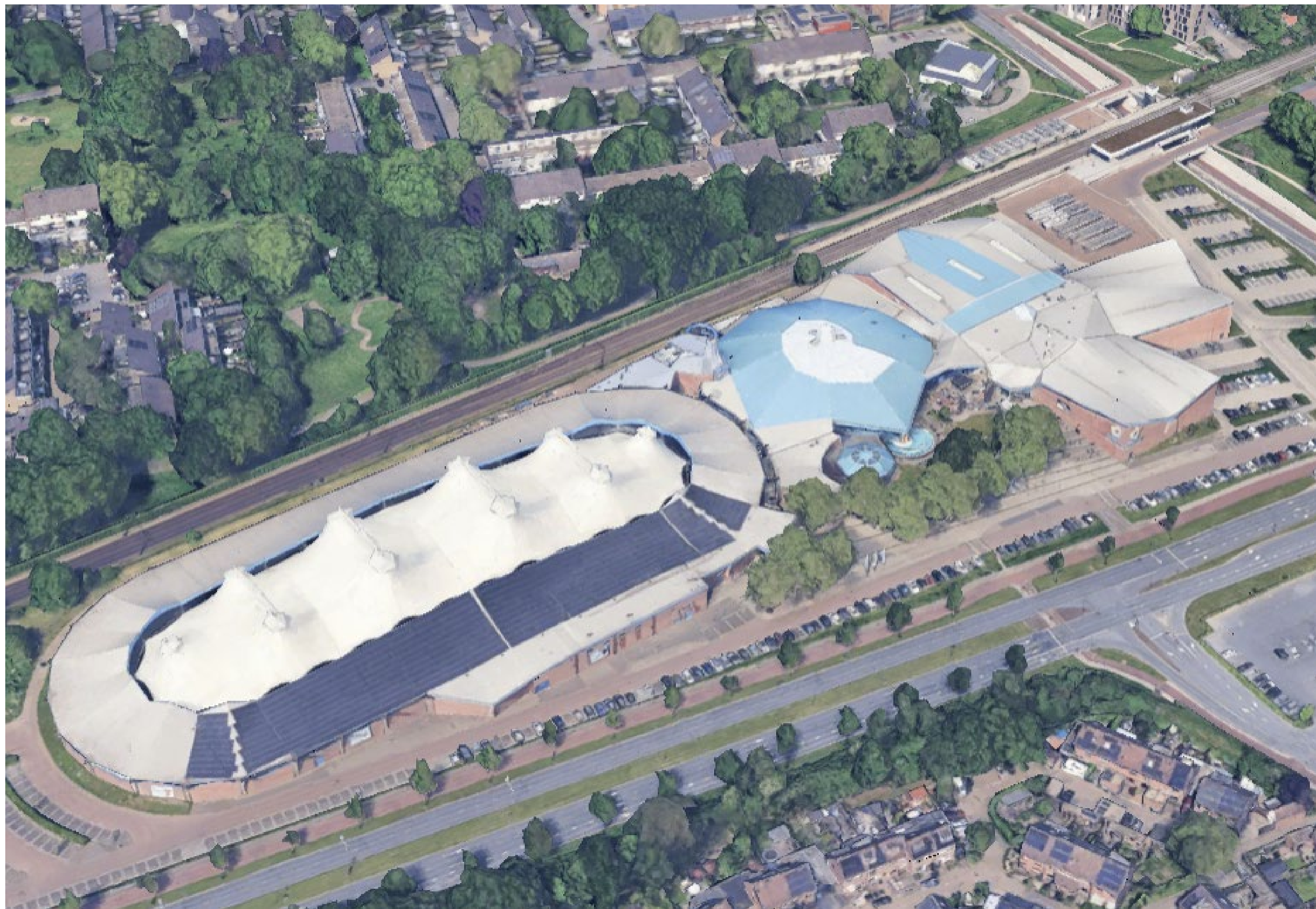


DE VERBINDING

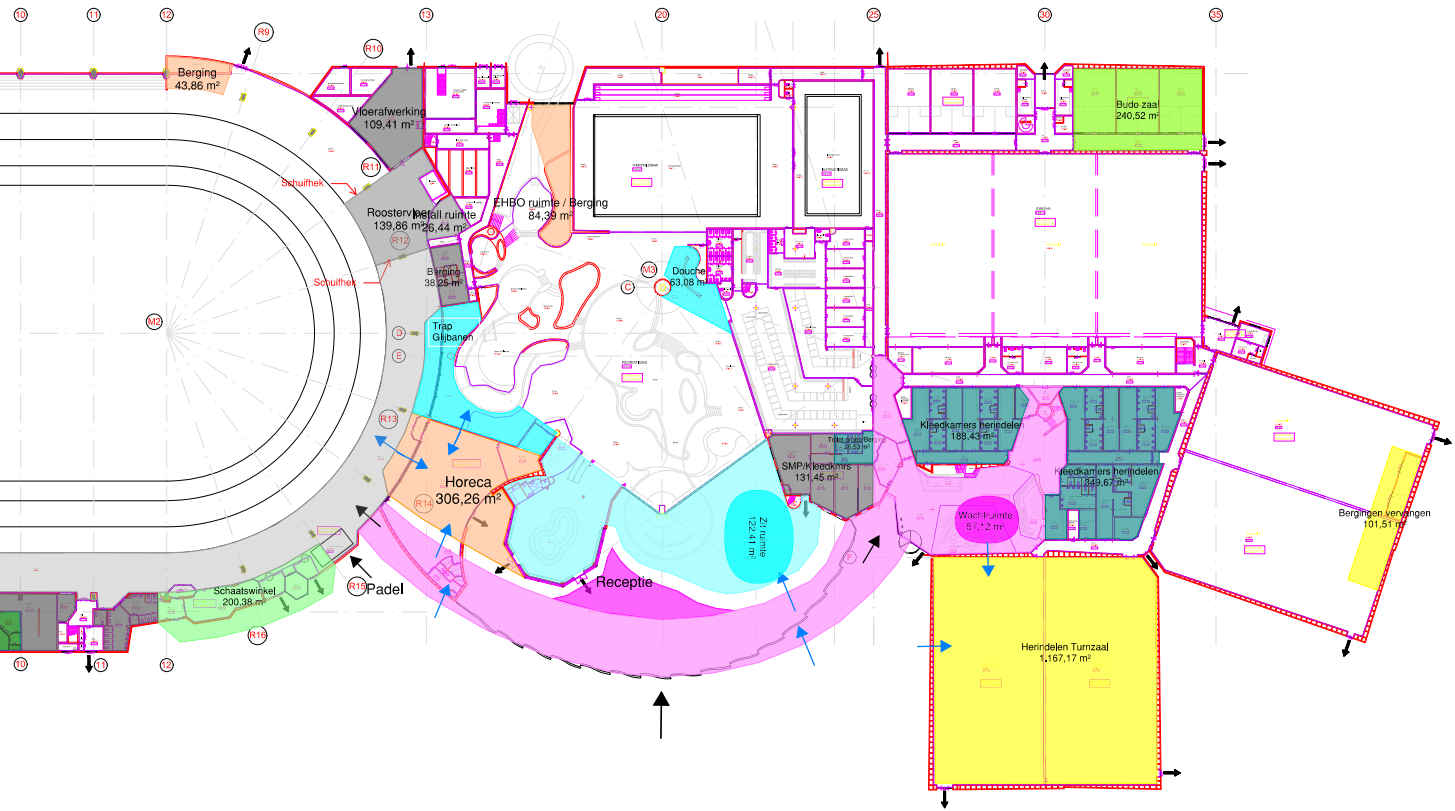


90 GRADEN
108 GRADEN
360 GRADEN

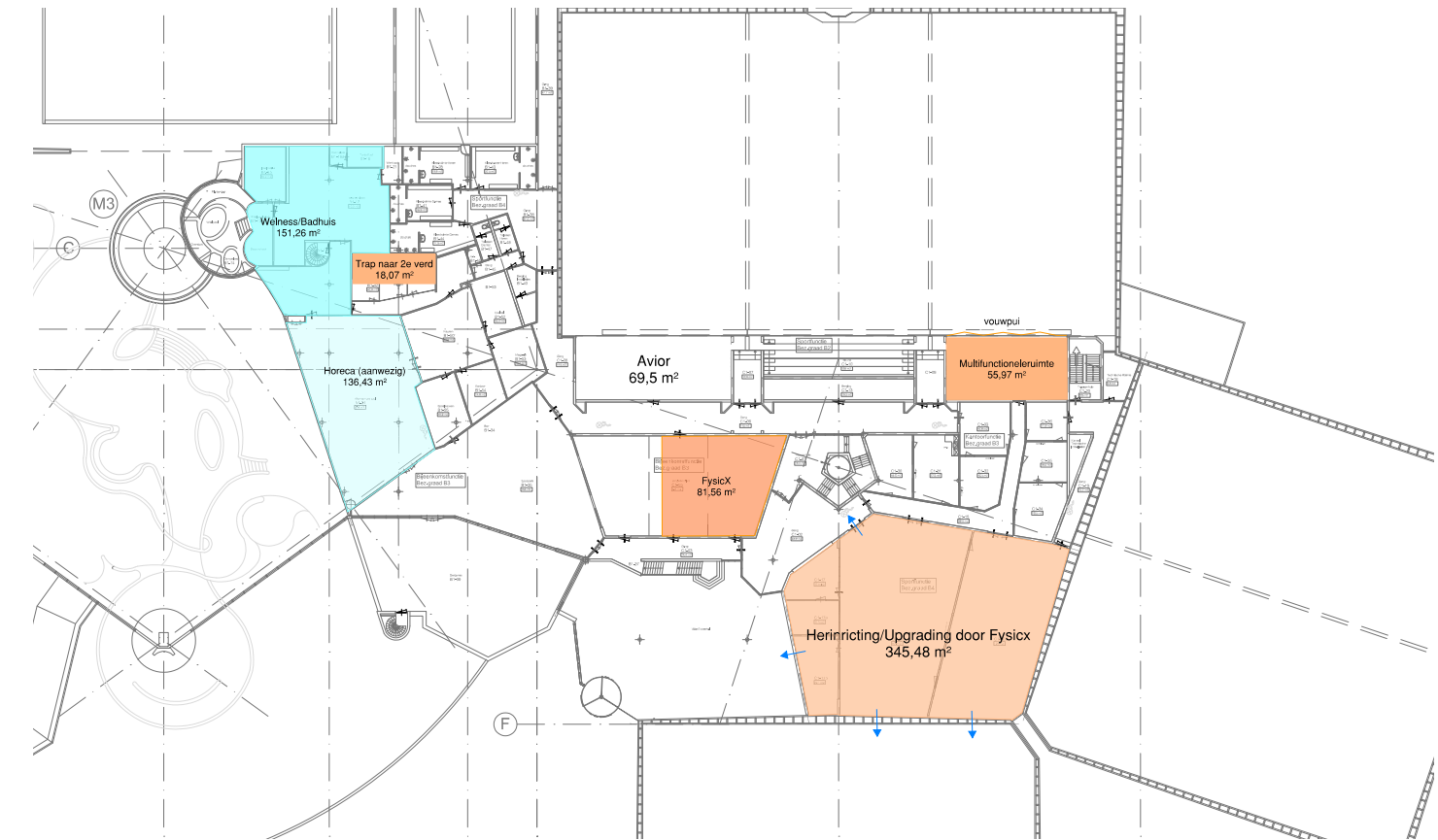




BEGANE GROND - WIJZIGINGEN



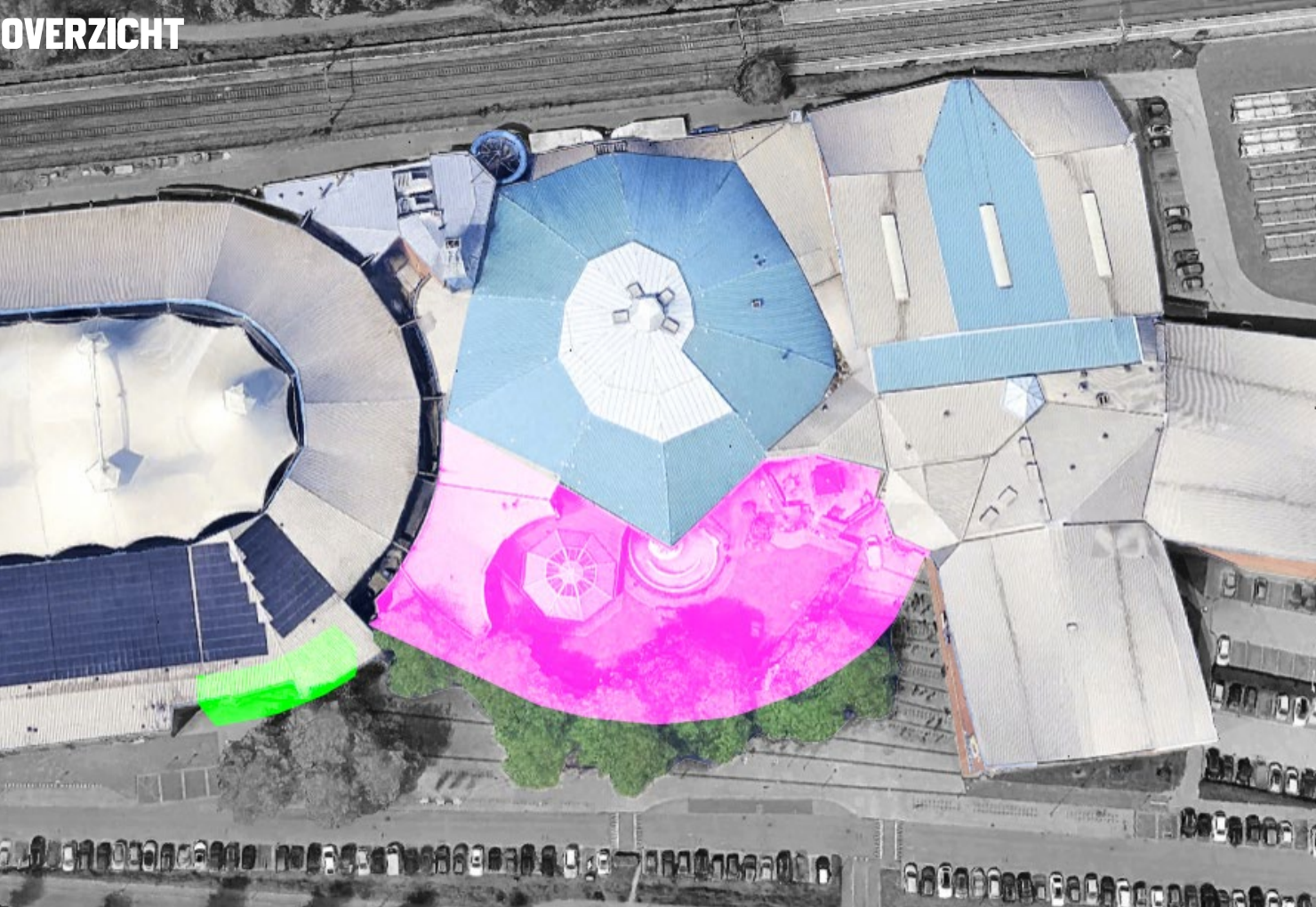
EERSTE VERDIEPING - WIJZIGINGEN



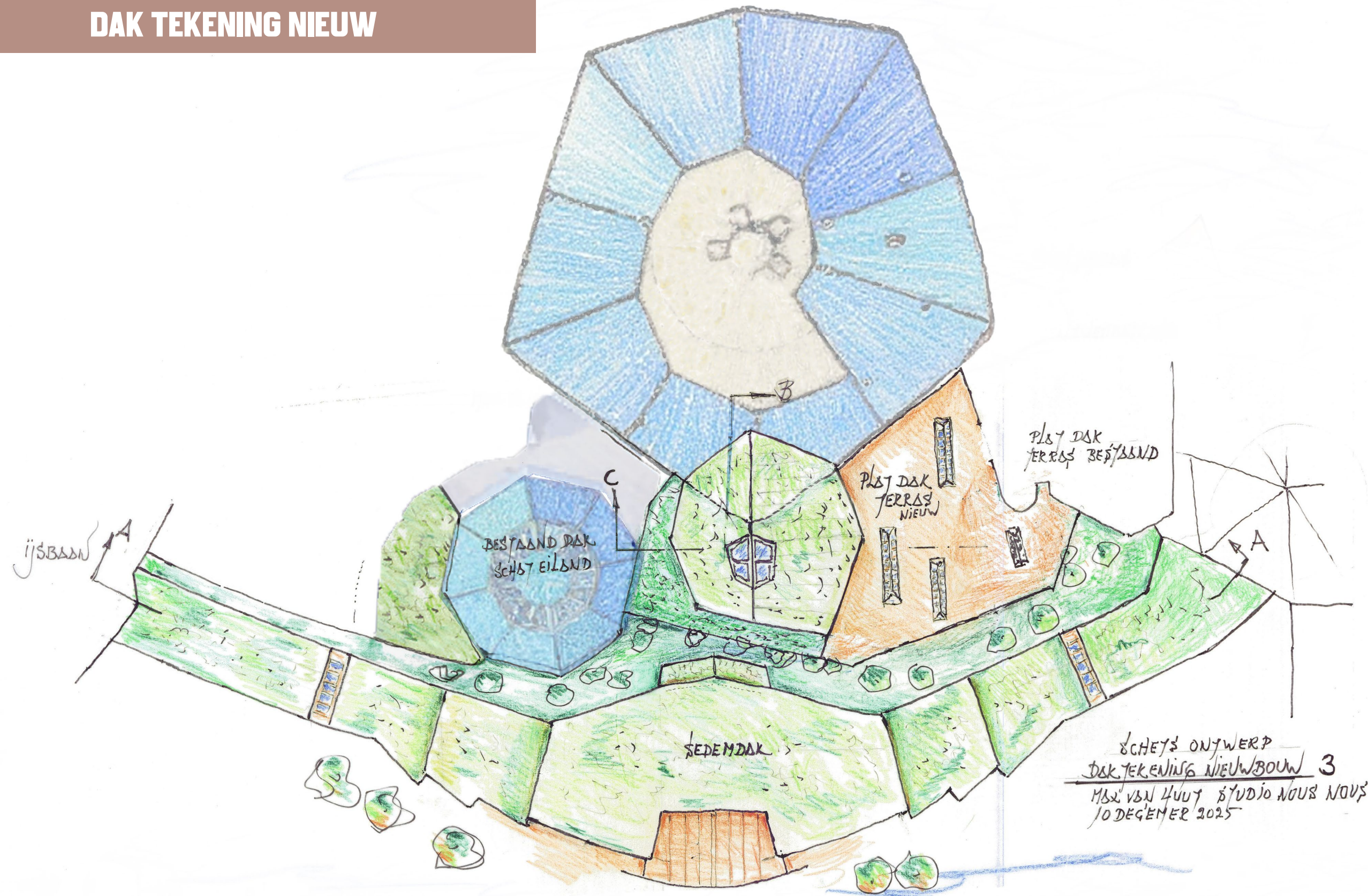
TWEDE VERDIEPING - WIJZIGINGEN



OVERZICHT

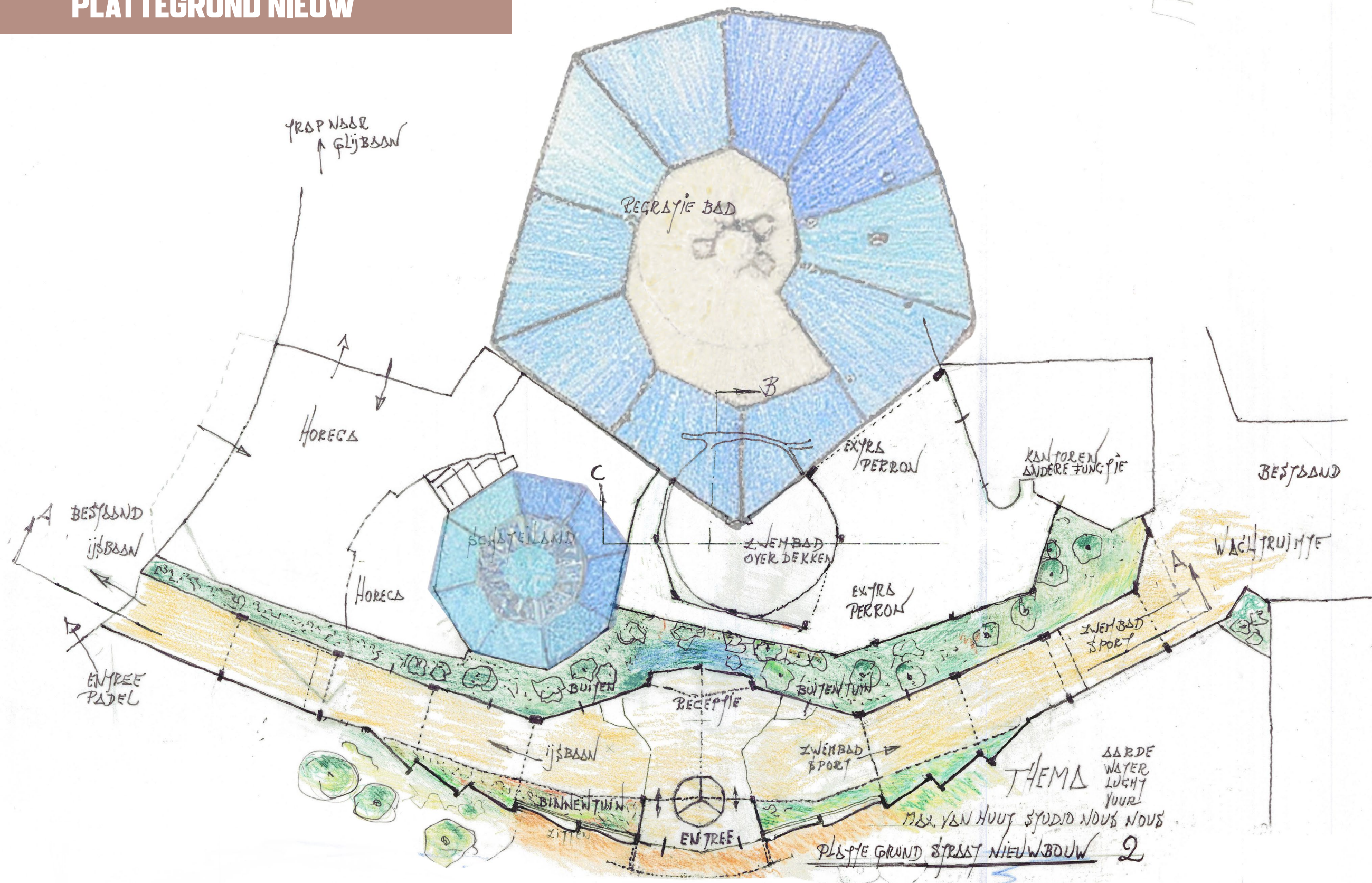


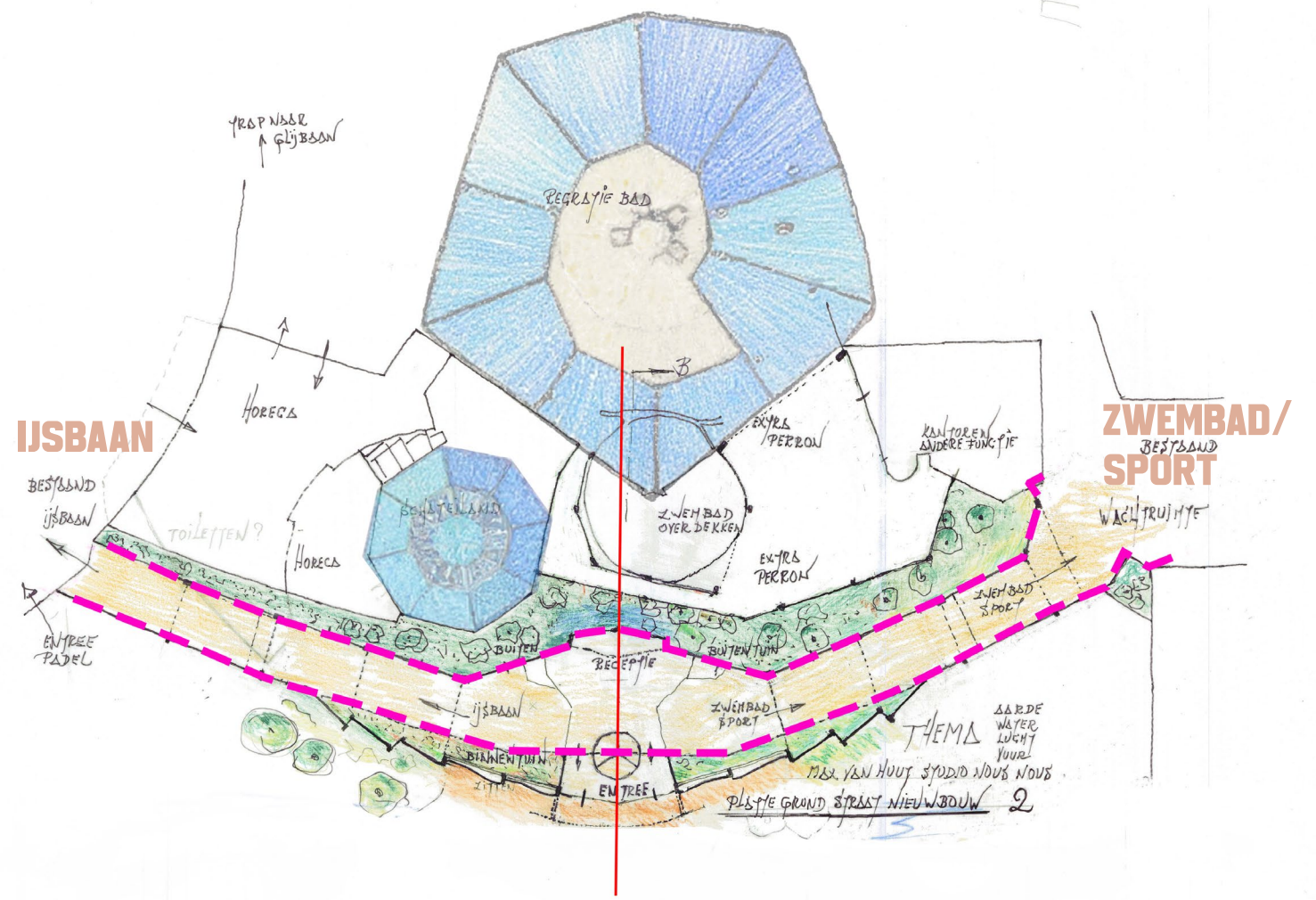
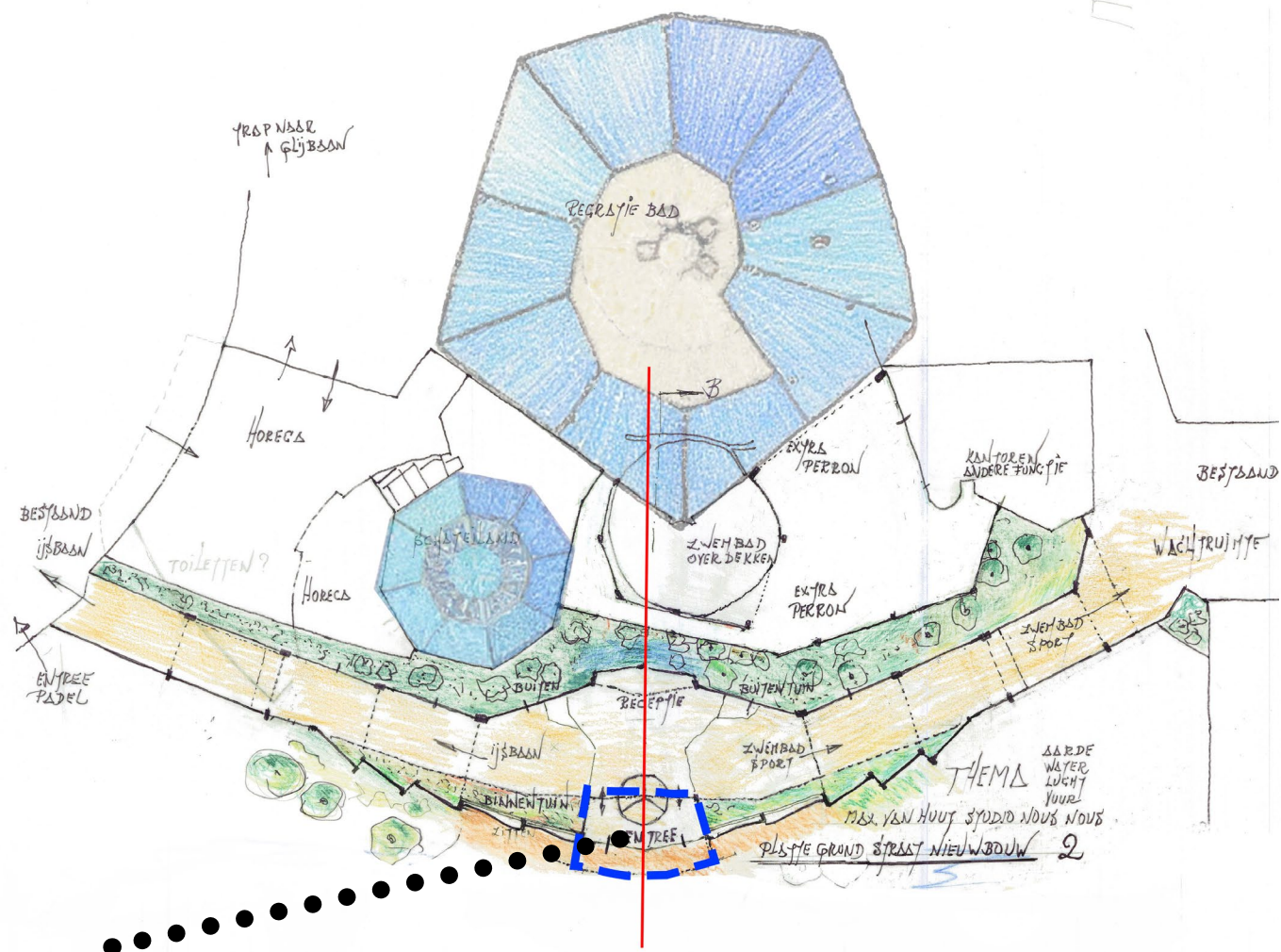
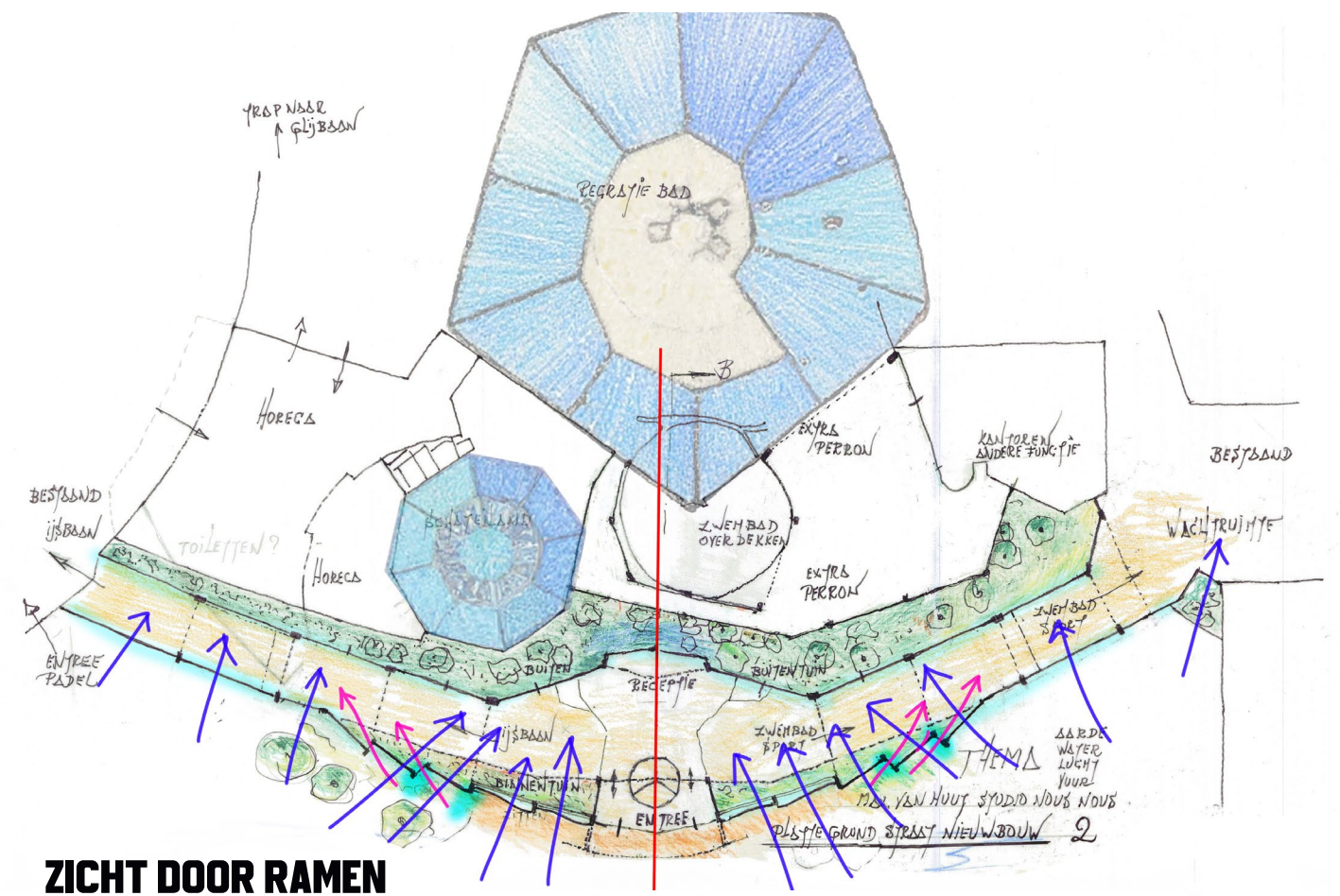
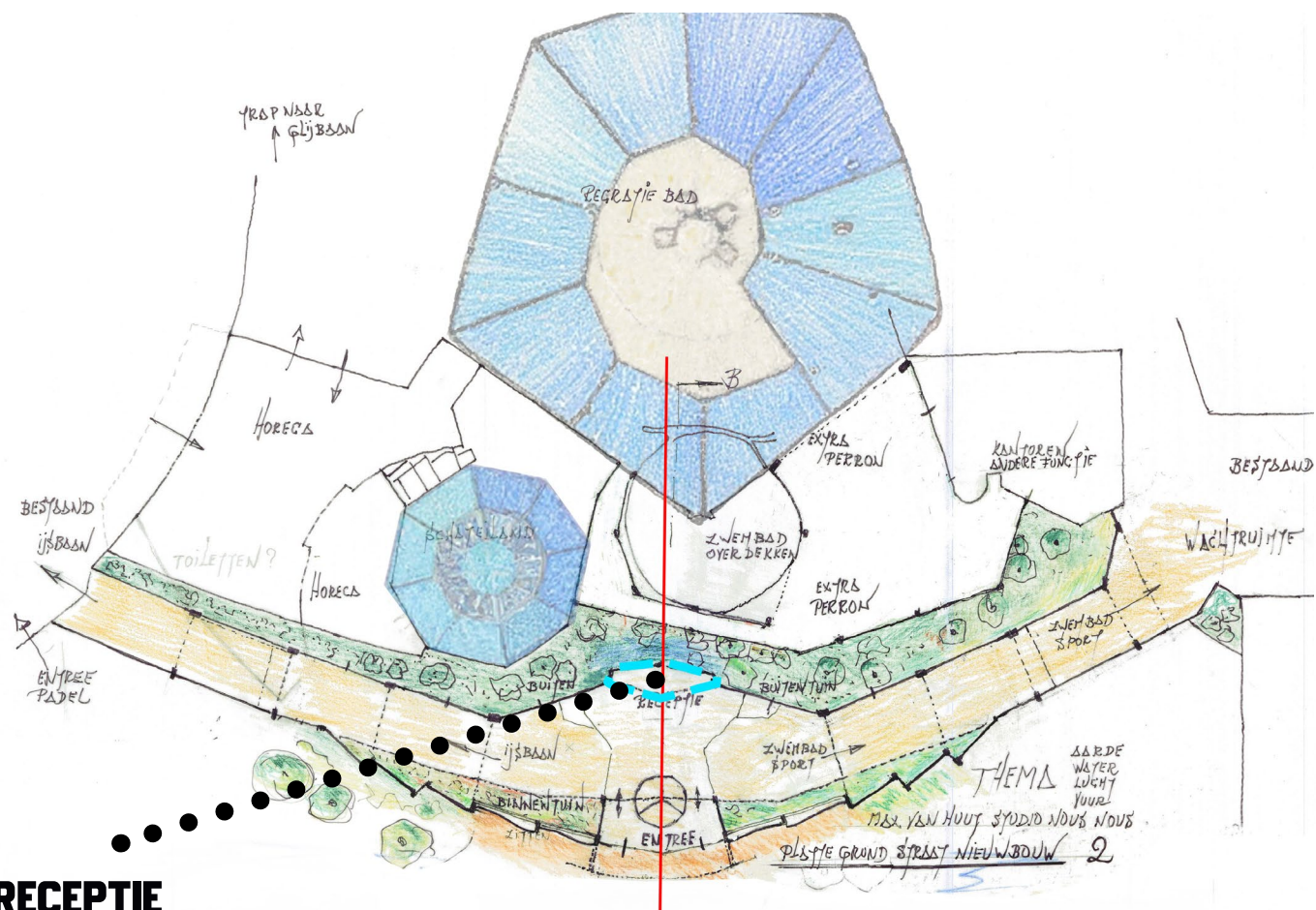
DAK TEKENING NIEUW



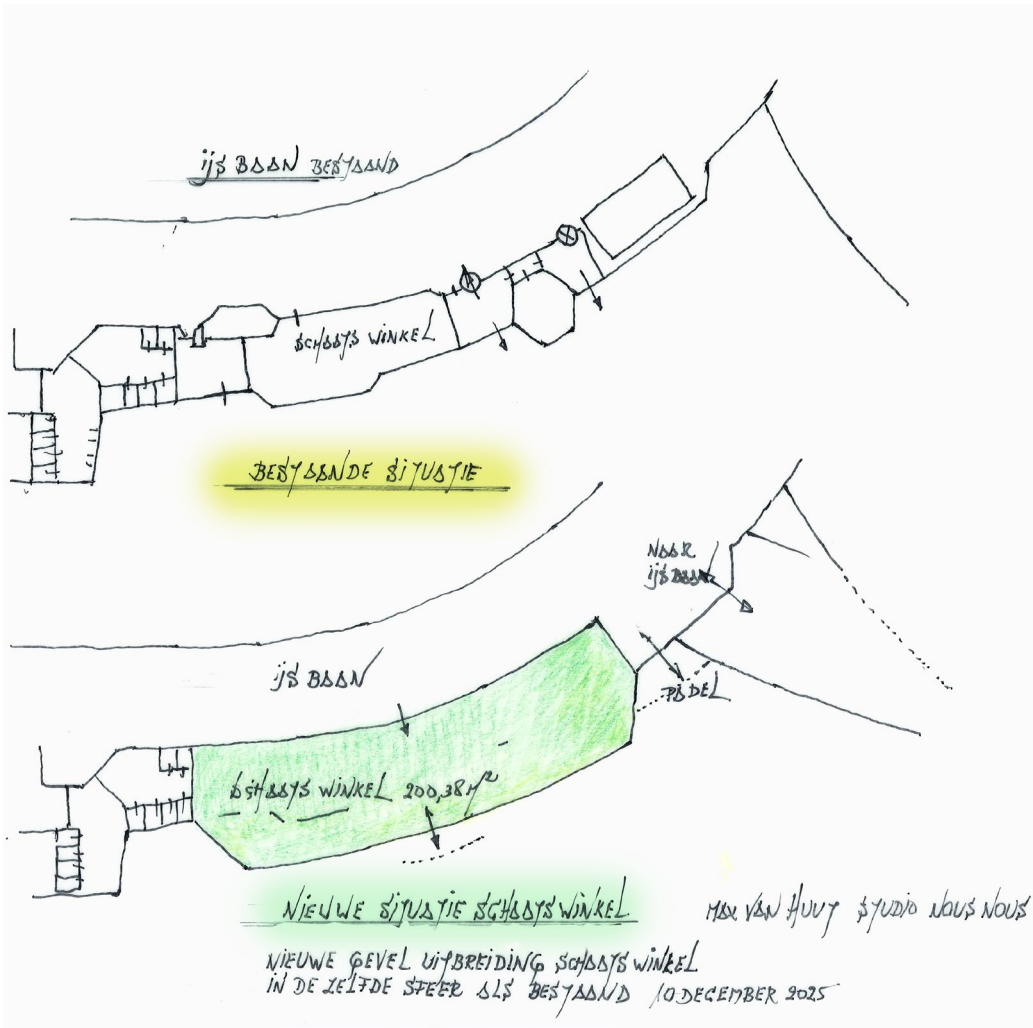
SCHEYS ONTWERP
 DAK TEKENING NIEUWBOUW 3
 MAX VAN HUUT STUDIO NOUS NOUS
 10 DECEMBER 2025

PLATTEGROND NIEUW





SCHAATSWINKEL



SCHETSDE NIEUWE SITUATIE SCHAATSWINKEL

GEVEL AANZICHT



3D VISUALISATIE NIEUWBOUW GEVEL AANZICHT 1



DANK VOOR UW AANDACHT



OPDRACHTGEVER :

De Scheg
BELEVING IN BEWEGING



Max van Huut

STUDIO

nous^ous



gemeente
Deventer

